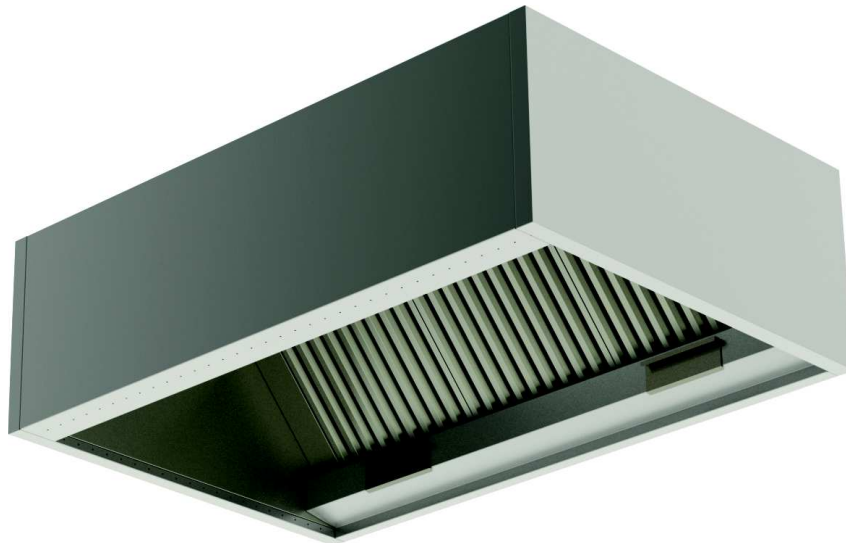


**Model: BF-600-Box****FEATURES**

Construction facilitates the insertion of filters that extend from the left to the right across the canopy length to ensure an even flow of air over the entire length. Seams are continuous throughout the length and width (there are no upstanding or protruding joints). All the joints are welded together. Ground and polished to the original material texture. The use of bolts, nuts and rivets are avoided. All sharp edges and burrs are cleaned and polished to ensure safety of cleaning personnel. Internal crevices between canopy joints are filled with a polyurethane or silicone sealer.

**FILTERS:**

Impingement baffle type filters manufactured of 0.7mm grade 430 st steel. Filters are easily fitted without the use of tools. They slide into the position provided by the filter housing frame. When fitted in position the filter also acts as a fire barrier. The filters are self draining and do not block with grease when used for prolonged periods without cleaning intervals.

**APPLICATION:**

Extracts steam and grease vapour produced by present day catering equipment.

### WORKING PRINCIPLES AND SCHEMATIC DRAWING

**Canopy Length  
mm**

**Air Volume  
m3**

1000	0.55
1200	0.66
1400	0.77
1600	0.88
1800	0.99
2000	1.10
2200	1.21
2400	1.32
2600	1.43
2800	1.54
3000	1.65
3200	1.76
3400	1.87
3600	1.98
3800	2.09
4000	2.20

**Canopy size**

**Fire Damper size**

1000 - 1300	300 x 250
1400 - 1800	400 x 250
1900 - 2200	500 x 250
2300 - 2500	600 x 250
2600 - 2800	700 x 250
2900 - 3400	800 x 250
3500 - 3800	900 x 250
4100 - 4400	1000 x 250

**1. VORTEX BAFFLE TYPE FILTER**

First stage baffle impingement filter system.

**2. FIRE DAMPER**

fusible link activated 140°C

